



Baltic Sea Region
Programme 2007-2013

Part-financed by the European Union
(European Regional Development Fund
and European Neighbourhood and
Partnership Instrument)



SIAULIAI CITY ACTIVITIES WITHIN UrbEnergy PROJECT

Aistė Žalevičienė

Rasa Budrytė

Šiauliai City Municipality Administration

16 June 2009 – Kick-Off-Conference, Potsdam

STATUS QUO

- Šiauliai ranks the fourth Lithuania city by population (aprox .129 thousand inhabitants).
- Šiauliai city occupies the area of 81.13 km². Its green area covers 18.87 km², water – 17.78 km² .
- There are a lot of multi-apartment houses constructed between 60s and 80s in Šiauliai City (about 500 multi-apartment houses, that need refurbishment).
- Despite all efforts, the refurbishment rate in the Šiauliai City is still very low.
- The inhabitants are not very interested in refurbishment process.
- Lack of financial resources.
- Multi apartment houses are renovated in a chaotic way without common design and integrated approach.

Multi apartment houses are renovated in a chaotic way without common design

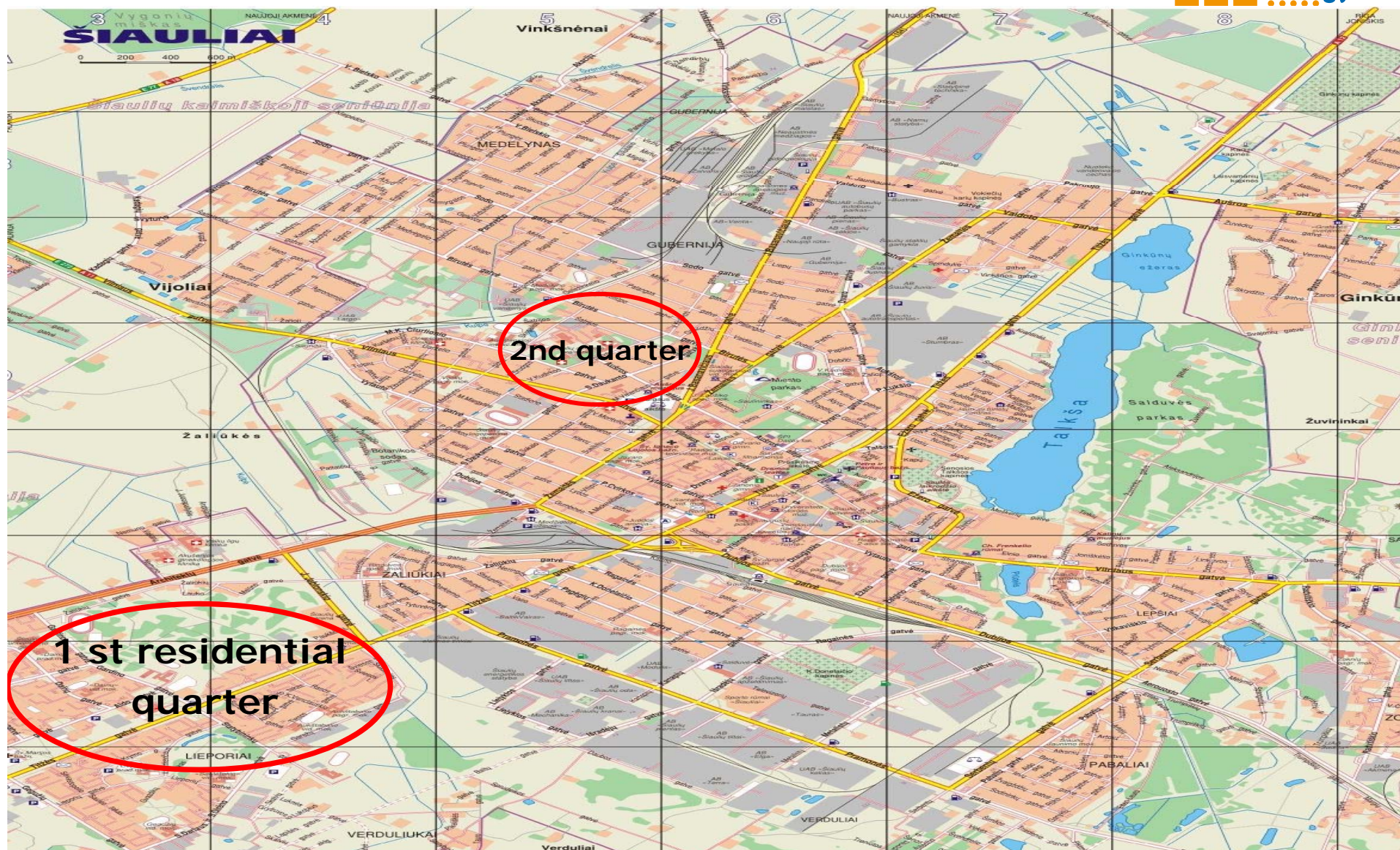


Problems to be addressed:

- Energy and heating saving;
- Efficiency of energy using and consumption;
- Conversion from old to modern;
- Improvement of townscape and city image;
- Involvement of community in to decision making processes;
- Consolidation and facilitation of cross-sectoral cooperation;
- Education of communities' consciousness and public spirit;
- Sustainable city development;
- Solution of global problems (climate change, global warming, etc.).

Project within Urb.Energy – Content (1)

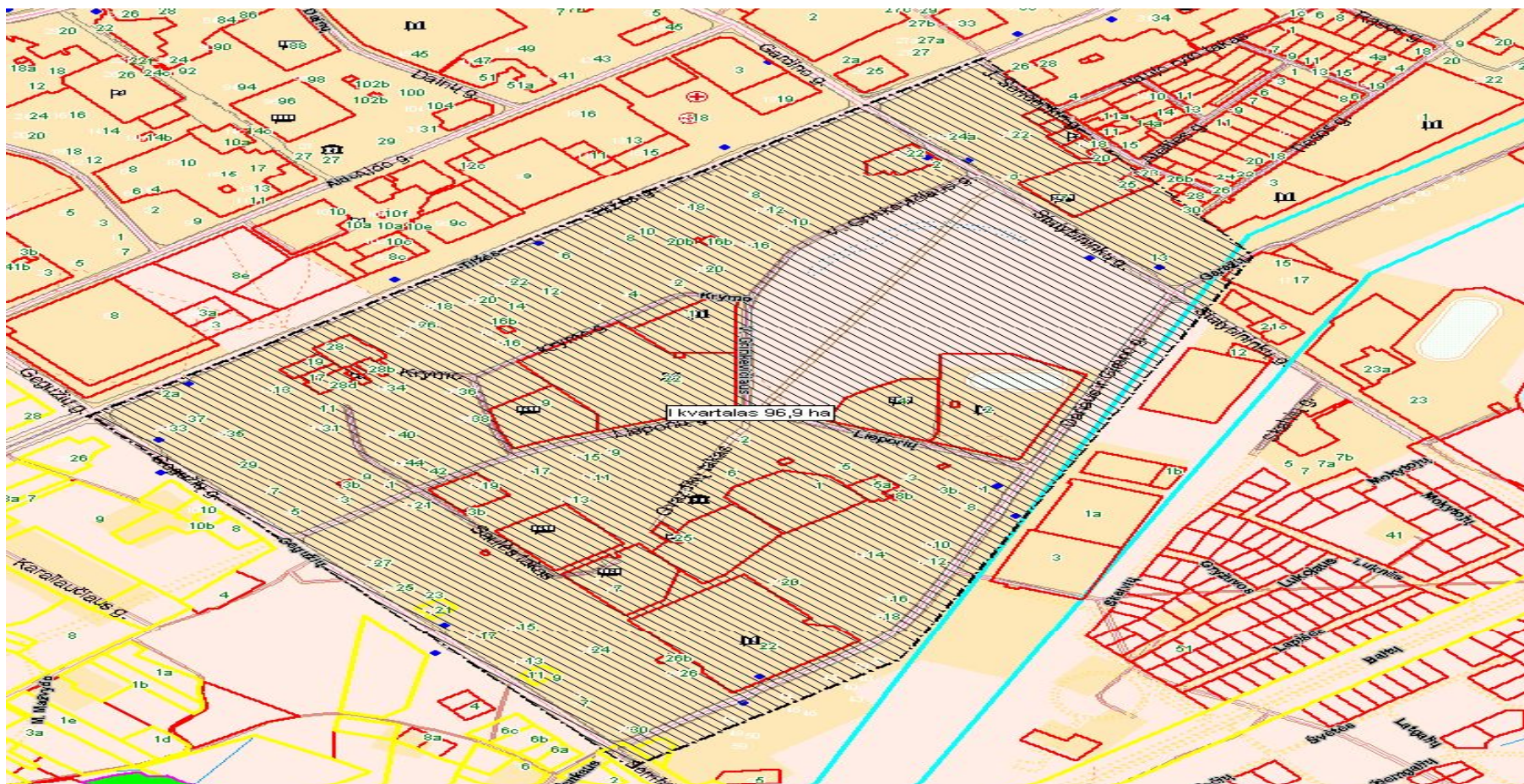
- *Šiauliai city will elaborate integrated urban development concepts for the sustainable rehabilitation of 2 residential areas. The main focus will be put on:*
 - *involvement of residents, communities and their proposals;*
 - *involvement of stakeholders outside the city administration.*
- *Awareness campaigns during Energy Saving Day will be organized.*



WHY THOSE TWO RESIDENTIAL AREAS HAVE BEEN CHOSEN???

- ✓ Old houses (“soviet planning heritage” in the different city parts);
- ✓ Initiative and active communities and NGO’s.

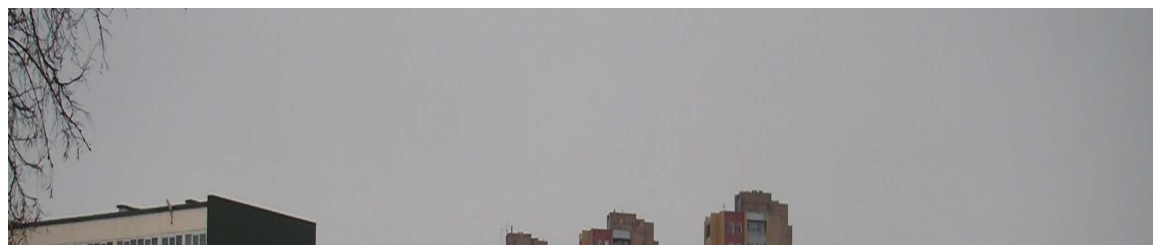
The 1st multi-apartment houses area (in the sleeping part of the city)





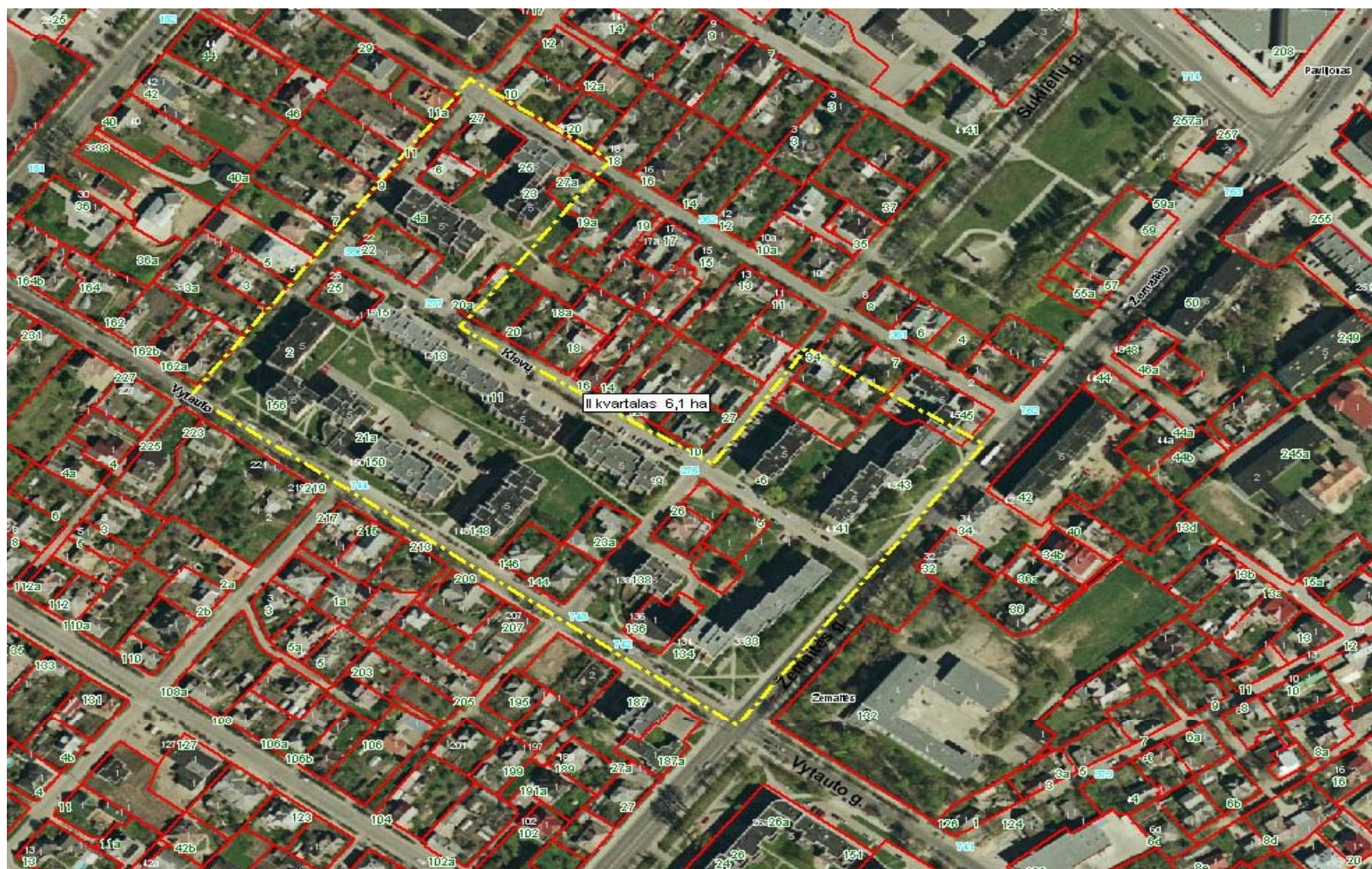
- **Area – 96,9 hectares;**
- **Number of houses (built from 1969 – 1975) – approximately 100;**
- **Lieporiai park with stadium;**
- **Other institutions:**
 - a) **3 Secondary schools;**
 - b) **Kindergartens;**
 - c) **Library;**
 - d) **College;**
 - e) **Shopping centers.**





The 2'nd multi-apartment houses area (in the central part of the city)





**Area – 6,1 hectares;
Number of houses
(built from 1969 – 1975)
– approximately 35**



Project within Urb.Energy – Results

- *Elaborated 2 integrated urban development concepts for 2 residential areas.*
- *Formed local preconditions for implementation of national Programme of Refurbishment of Multi-family Buildings.*
- *Organized 3 awareness campaigns.*
- *Prepared all documents necessary for real investments.*
- *Accumulated Urb. Energy good practice.*

Activities in WP3

- *Elaboration of 2 integrated urban development concepts for 2 residential areas :*

Actions inside city administration (municipality): (make a comparable review, set targets, set a plan for achieving the targets, organise public procurement (purchasing), prepare all necessary documents for starting to realise integrated urban development concepts).

Actions outside city administration: (organise meetings, awareness campaigns, involve society in the process of sustainable etc.)

Activities in WP4

Šiauliai city during preparation of integrated concept for urban development will elaborate energy efficient rehabilitation measures and will involve all stakeholders (residents, energy suppliers (SC „Šiauliai Energy”), decision-makers and politicians, NGO’s).

Activities in WP5

- *Description and analysis of existing funding sources on national level.*
- *Šiauliai city during preparation of integrated concept for the sustainable and holistic rehabilitation of residential areas:*
 - ***will analyze the best practices of other partners***
 - ***incorporate all possible, innovative and mostly effective financing measures, that will assure realization of developed concepts.***

Thank you for your attention

**Šiauliai City Municipality
Vasario 16-osios st. 62, Šiauliai
Lithuania**

**E-mail: a.zaleviciene@siauliai.lt
r.budryte@siauliai.lt**