



**Baltic Sea Region**  
Programme 2007-2013

Part-financed by the European Union  
(European Regional Development Fund  
and European Neighbourhood and  
Partnership Instrument)

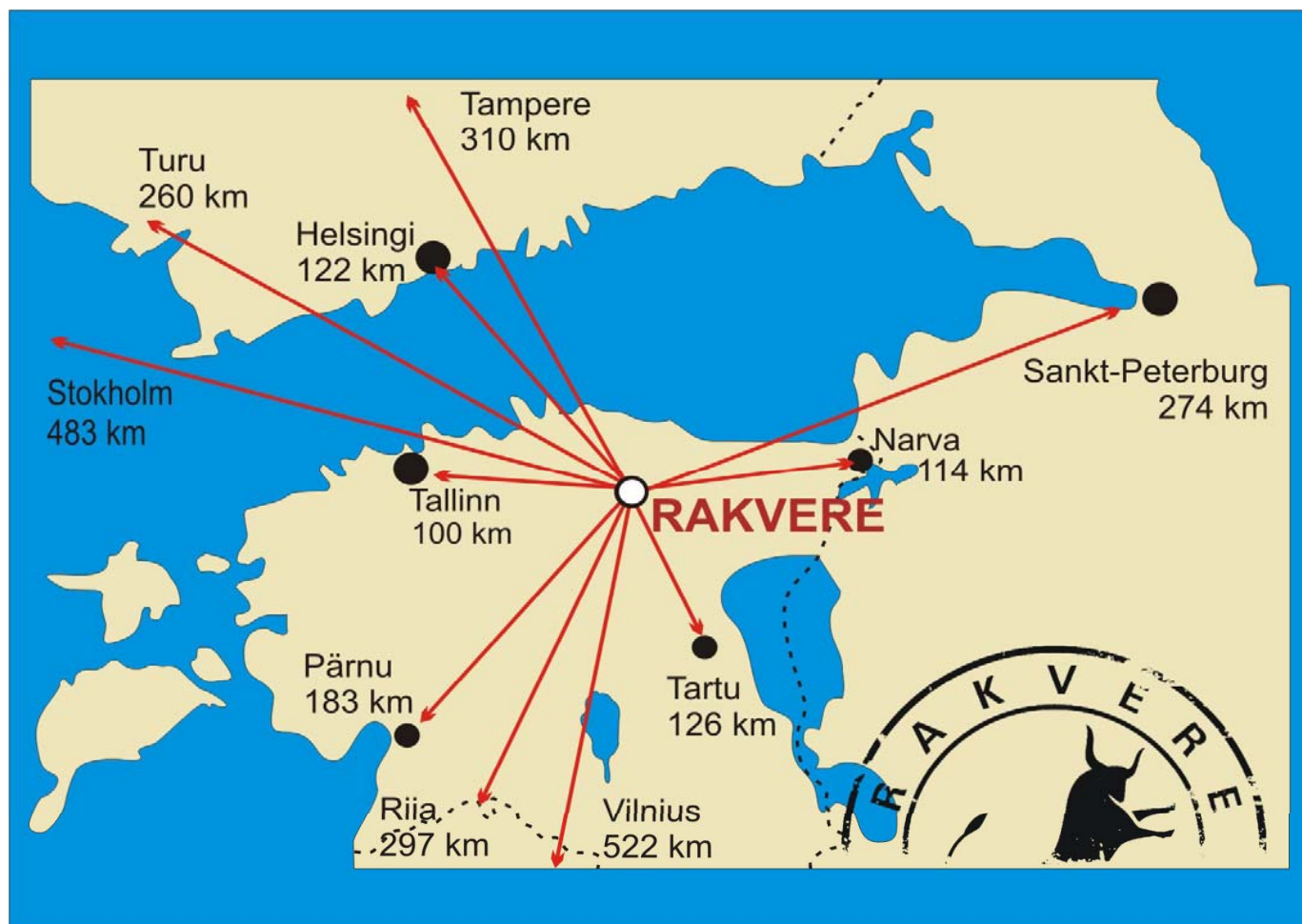


# Rakvere's partnership in Urb.Energy project

**Anu Oja**  
Rakvere City Government

16 June 2009 – Kick-Off-Conference, Potsdam

# Rakvere



- 10,64 sq km
- 1226 – first mentioned
- 1302 – Rights of Lübeck

# View on Rakvere



*Population ca  
17 000 people.  
Ca 70% live in  
multistoried  
buildings.*

*Emission of CO<sub>2</sub> in  
Rakvere – ca 16  
000 tons. The total  
insulation or  
refurbishing of such  
houses would  
result in the  
reduction of CO<sub>2</sub>  
emissions by 8,2%*



## Covenant of Mayors

- *Rakvere signed the Covenant of Mayors - February 2009*
- *Sustainable Energy Action Plan in order to achieve the goals set forth by the Covenant of Mayors. The plan explains how Rakvere intends to reach the objectives in terms of reduction of CO2 emissions for 2020.*



# Residential buildings in Rakvere



## Rakvere's aims within Urb.Energy (WP 4)

- *Construction projects for 4 types of residential buildings. Projects serve as a basis for later implementation of recommendations set forth by the audit documents.*
- *The constructional projects do not only consist of the mere insulation concepts of the houses but also take into account the overall appearance or image of the city by assigning colour scheme for the houses.*

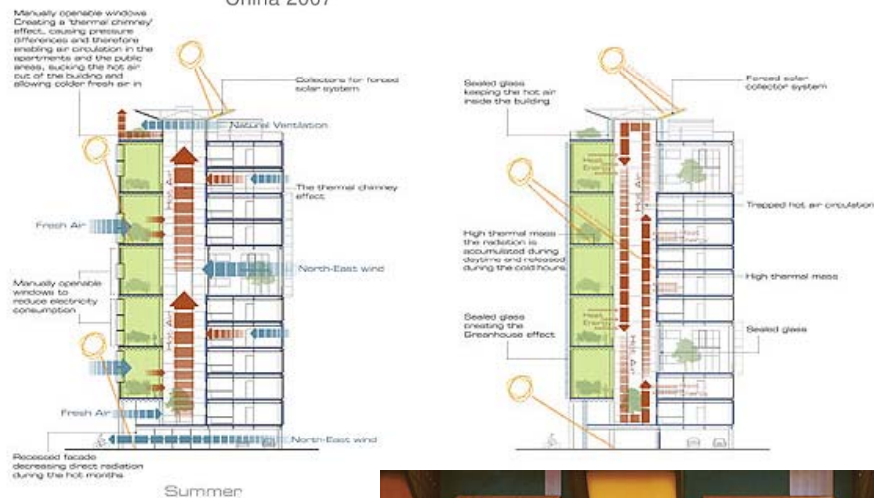


# Some ideas?

KnafoKlimor  
ARCHITECTS

## AGRO-HOUSING toward a more sustainable society [back](#)

Winners of the 2nd International Architecture  
Competition for Sustainable Housing. Living Steel Website  
China 2007



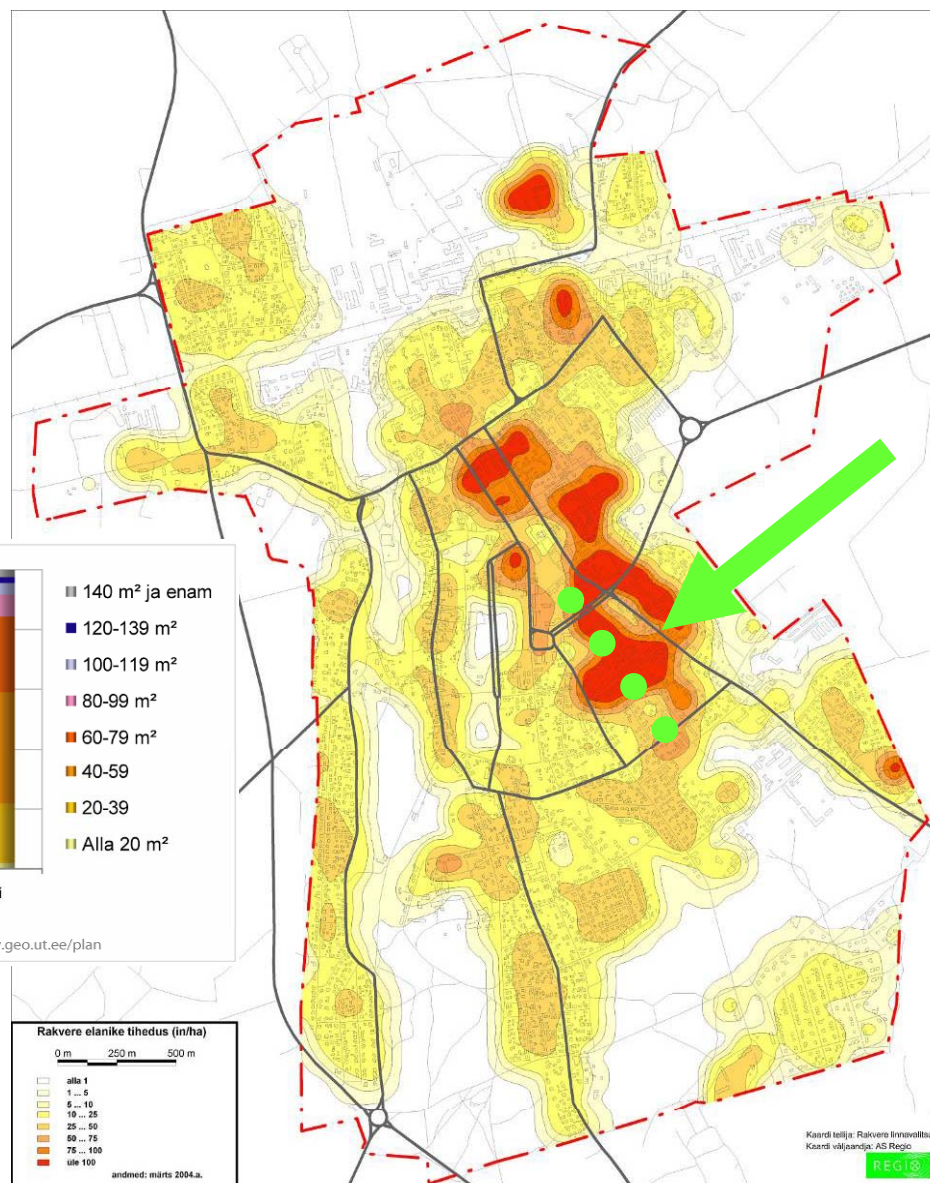
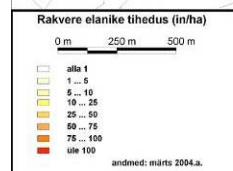
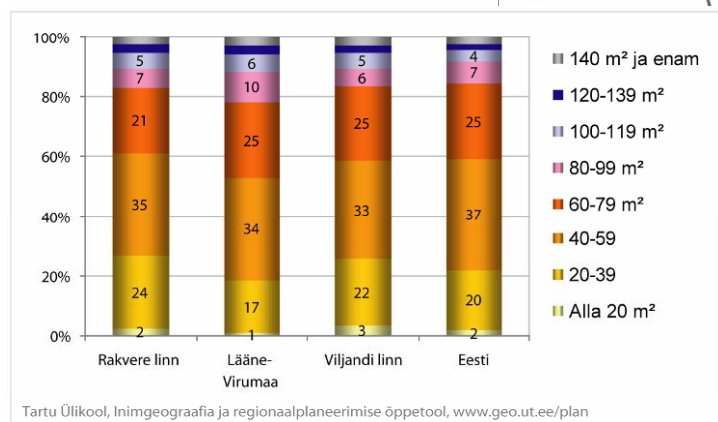
residential building  
tokyo, japan



architect **Alejandro  
Villarreal**  
mexico

# Rakvere's aims within Urb.Energy (WP3)

- *Developing an urban area as a pilot area in Rakvere by creating a technical project with the aim to improve the living quality of the specific residential quarter:*
  - ✓ *creating green space in the middle of the town instead of outskirts of town*
  - ✓ *Reduction of pollution and diminishing the possibility to use motor vehicles in the area*







# Results

- *Integrated urban development - concept on how to go on with the Rakvere`s most tensely populated area*
- *Energy efficient rehabilitation - construction projects for the most typical residential buildings in Rakvere*

*This will result in:*

- *a more attractive city*
- *towards a Green City*