



Part-financed by the European Union
(European Regional Development Fund
and European Neighbourhood and
Partnership Instrument)



Energy Efficient Rehabilitation

Improvement of Buildings and Energy Supply Structure

Torsten Stehr

Potsdam Chamber of Commerce and Industry (CCI Potsdam)

16.06.2009 – Kick-Off-Conference

WP 4 – Energy Efficient Rehabilitation

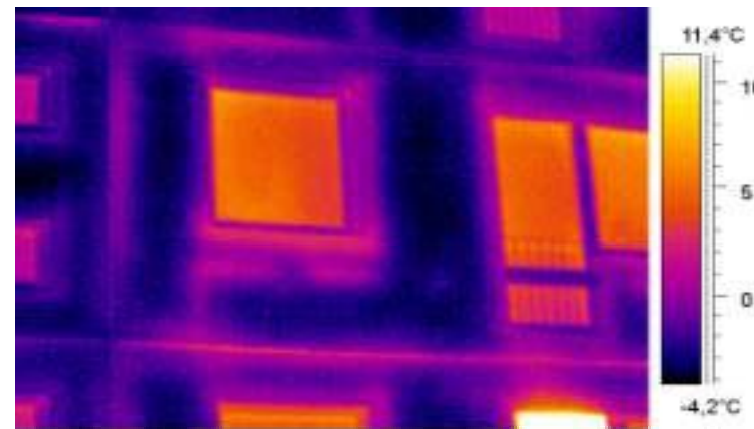
1. Current situation in Brandenburg
2. Project plan Potsdam CCI
3. Project outputs Potsdam CCI



WP 4 – Energy Efficient Rehabilitation

1. Current situation in Brandenburg

- More than 10 billion € invested in Brandenburg's housing stock since 1991. 85% of the housing stock have been completely or partly refurbished. Energy consumption and CO₂ emissions in modernised stocks decreased by 50%.



WP 4 – Energy Efficient Rehabilitation

1. Current situation in Brandenburg

- ETI task group “energy efficient construction/energy efficiency in buildings” existing since 1998.
- Berlin-Brandenburg Association of Housing Companies (BBU) is task group leader from the beginning. 220 housing companies and cooperatives from Brandenburg, representing a housing stock of 380,000 flats, are member of BBU .
- Project ALFA started in December 2007: Improvement of facility efficiency in BBU member buildings through small investments (optimisation of heating boilers, pumps and control systems, increasing service quality/training of technical personnel).

WP 4 – Energy Efficient Rehabilitation

1. Project plan Potsdam CCI

- Overview of general problems concerning energy supply infrastructure and energy efficiency in urban quarters following refurbishing measures.

Deadline: 12/2009

Implementation proposal: meetings with stakeholders in each region – regional reports on RES and implementation problems

Partners within WP 4: 1, 2, 3, 4, 5, 6 (DE), 8 (PL), 10, 11 (LIT), 12, 13 (LV), 14, 15, 16 (EST), 17 (RUS), 18 (BY)

WP 4 – Energy Efficient Rehabilitation

1. Project plan Potsdam CCI

- Survey of projects using renewable energy based supply systems for housing blocks, public buildings and residential areas (district heating, CHP solutions), identification of best practices.

Deadline: 12/2010

Implementation proposal: questionnaire on demonstration projects/
best practices – criteria:

- sustainable
- implemented
- transferable

WP 4 – Energy Efficient Rehabilitation

1. Project plan Potsdam CCI

- questionnaire on demonstration projects/ best practices

WP 4: PROJECT SURVEY

Template for projects using renewable energy

Partner no.	
Name of institution	
Region	
Title of the project	
Type of RES	
Implementing body	
Description of the pilot project	
Problems occurred	
Energy saving CO2 saving	
Proposed promotion	
Co-operation desired	

WP 4 – Energy Efficient Rehabilitation

1. Project plan Potsdam CCI

- **Initiating an innovative project for heat and domestic water supply based on renewable energies (or combined with fossil fuels).**

Deadline: 6/2011

Implementation proposal: will be implemented with BBU and regional housing companies

WP 4 – Energy Efficient Rehabilitation

1. Project plan Potsdam CCI

- Exchange of experiences between Brandenburg stakeholders and international partners.

Deadline: 12/2011

Implementation proposal: regional and meetings abroad, trade missions, stakeholder visits

WP 4 – Energy Efficient Rehabilitation

1. Project plan Potsdam CCI

- **Regional dissemination activities:**
 - Dissemination of project results on ETI website and in task group meetings.
 - Publishing summary of results in a booklet.
 - Conference: Chances and Requirements of Energetic Rehabilitation of Buildings (market stimulation package II) 13.07.2009.
 - Brandenburg Energy Day (Energy Efficiency) 10.09.2009.
 - 2 regional workshops on sustainable energy supply infrastructure.
- **Elaboration of action and policy recommendations.**

**Thank you for your attention.
Looking forward to a fruitful
co-operation with you.**